

Part Number: PT398-52122

Conflicts

Do not install into vehicles without RKE, or with Factory Alarm System.

Recommended Sequence of Application

Item #	Accessory	
1	Navigation	
2	V4	
3	V5	

Kit Contents

Item #	Quantity	Description
1	1	Wire Harness

Hardware Bag Contents

Item #	Quantity	Description
1	1	GBS ECU
2	1	V5 ECU
3	1	Status Monitor w/Microphone
4	4	Foam Tape
5	35	Wire Ties
6	2	Window Warning Label
7	1	Owner's Manual
8	1	Warranty Card
9	8	Butyl
10	2	Large Foam Tape (1= 2 pieces)







Additional Items Required For Installation

Item #	Quantity	Description

Recommended Tools

Personal & Vehicle Protection	Notes
Safety Glasses	
Safety Gloves	(Optional)
Vehicle Protection	Blankets, Parts Boxes
Special Tools	Notes
Striker Tool	CAD-E IADS ALL 02-016-01
Installation Tools	Notes
Phillips Screwdriver	#2 screwdriver or tip
Flat Blade Screwdriver	Jeweler's screwdriver
Nylon Panel Removal Tool	e.g. Panel Pry Tool #1 Toyota SST # 00002-06001-01
Side Cutters	
Torque Wrench	36 in•lbf (4.07 N•m)
Utility Knife	
Tape	Clear
Socket	10mm, Extension
Special Chemicals	Notes
Cleaner	VDC Approved Cleaner
Glass Cleaner	Household Glass Cleaner

Legend

	STOP: Damage to the vehicle may occur. Do not proceed until process has been complied with.
	OPERATOR SAFETY: Use caution to avoid risk of injury.
	CAUTION: A process that must be carefully observed in order to reduce the risk of damage to the accessory/vehicle and to ensure a quality installation.
	TOOLS & EQUIPMENT: Used in Figures calls out the specific tools and equipment recommended for this process.
	REVISION MARK: This mark highlights a change in installation with respect to previous issue.
	SAFETY TORQUE: This mark indicates that torque is related to safety.

Care must be taken when installing this accessory to ensure damage does not occur to the vehicle. The installation of this accessory should follow approved guidelines to ensure a quality installation

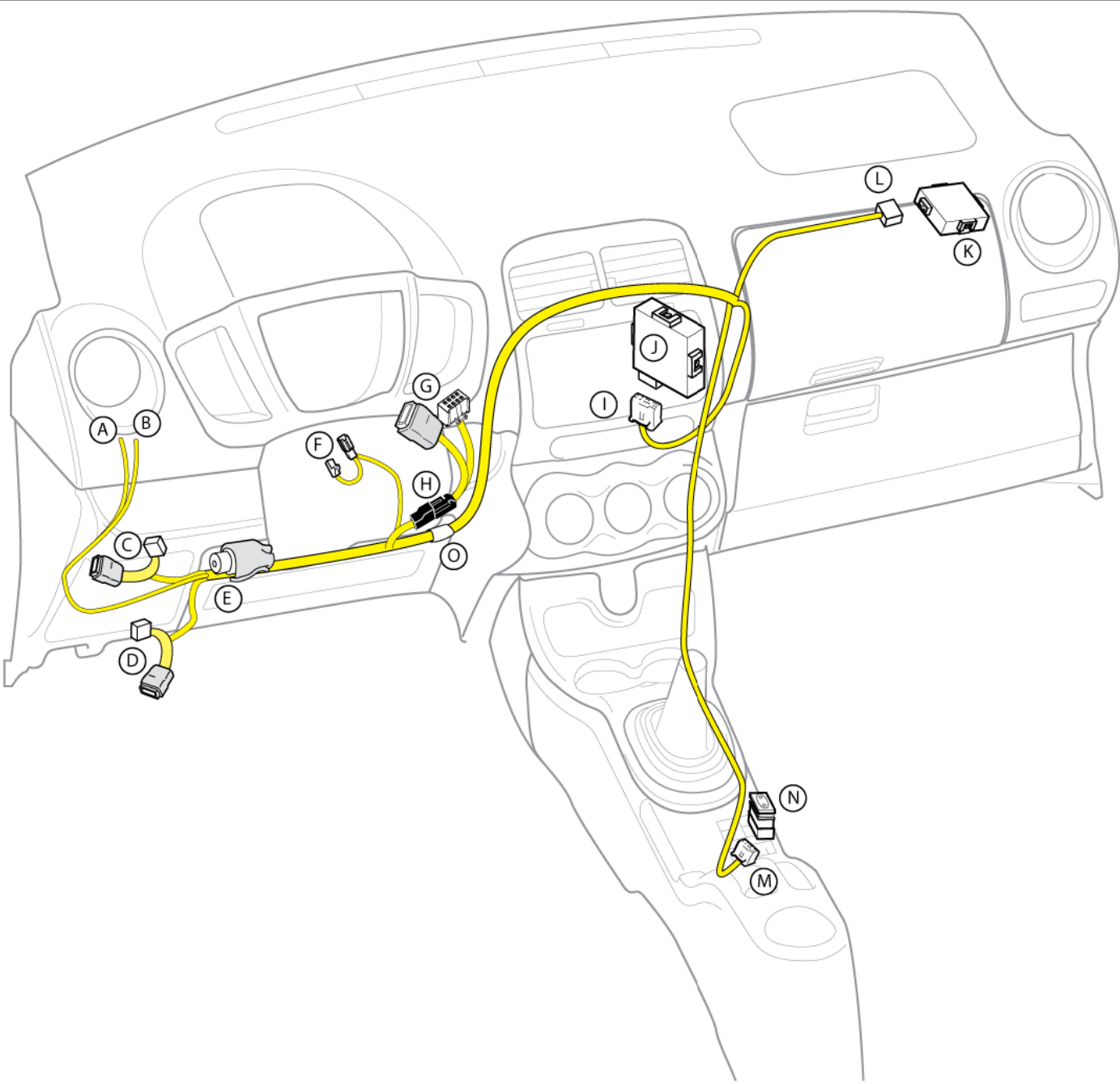
These guidelines can be found in the "Accessory Installation Practices" document.

This document covers such items as:

- Vehicle Protection (use of covers and blankets, cleaning chemicals, etc.)
- Safety (eye protection, rechecking torque procedure, etc.)
- Vehicle Disassembly/Reassembly (panel removal, part storage, etc.)
- Electrical Component Disassembly/Reassembly (battery disconnection, connector removal, etc.)

Please see your Scion dealer for a copy of this document

(A)	PINK Wire Pin Insertion
(B)	ORANGE Wire Pin Insertion
(C)	14 Pin Connector
(D)	6 Pin Connector
(E)	Relay
(F)	2 Pin Connector
(G)	8 Pin Connector for Ignition Connector
(H)	4 Pin Connector for V4/V5 Add On
(I)	36 Pin Connector for V5 Security ECU
(J)	V5 Security ECU
(K)	GBS ECU
(L)	8 Pin Connector for GBS ECU
(M)	4 Pin Connector for V5 Status Monitor
(N)	V5 Status Monitor
(O)	White Tape Marker



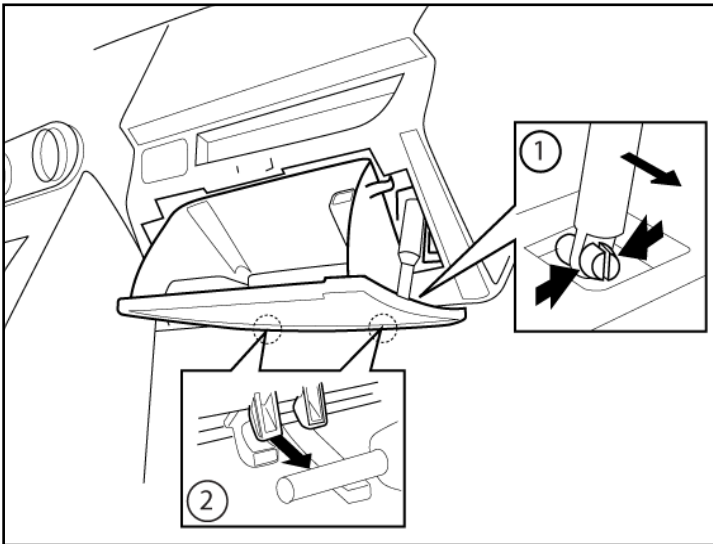


Fig. A-3

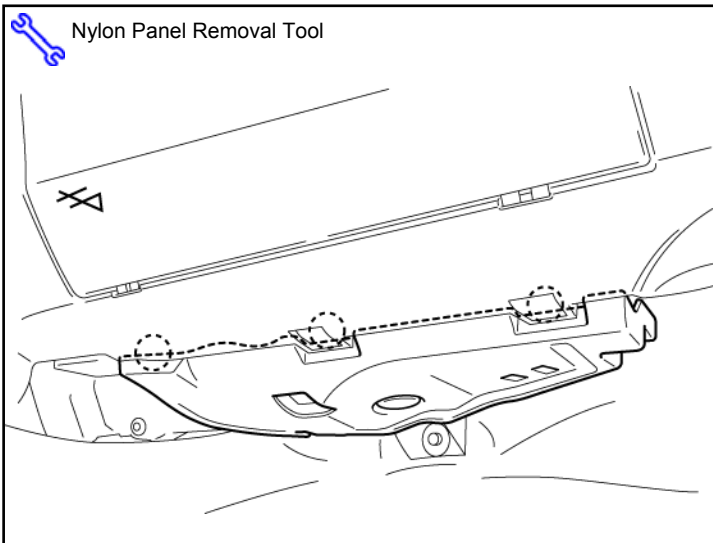


Fig. A-4

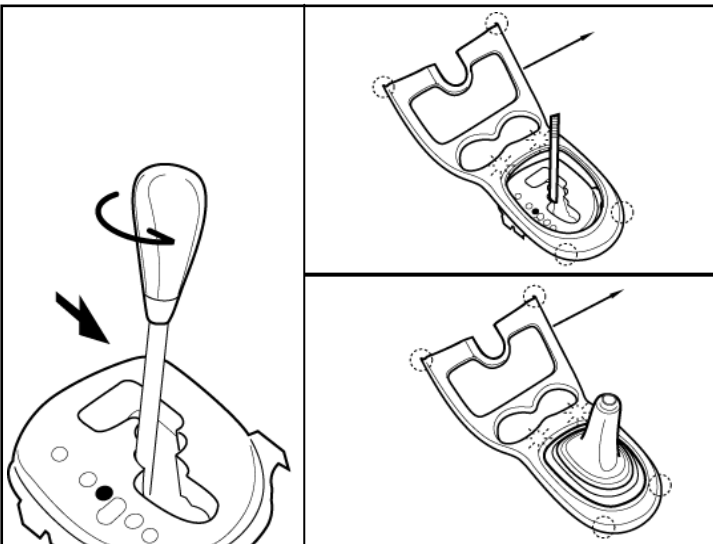


Fig. A-5

3. Disconnect the Dampener from the glove box.
4. Remove the Glove box.

5. Remove the passenger side Under cover.

Automatic Transmission vehicle

6. Unscrew the Stick shift knob, and remove the Upper center console panel.

Manual Transmission vehicle

7. Unscrew the Stick shift knob, and remove the Upper center console panel.

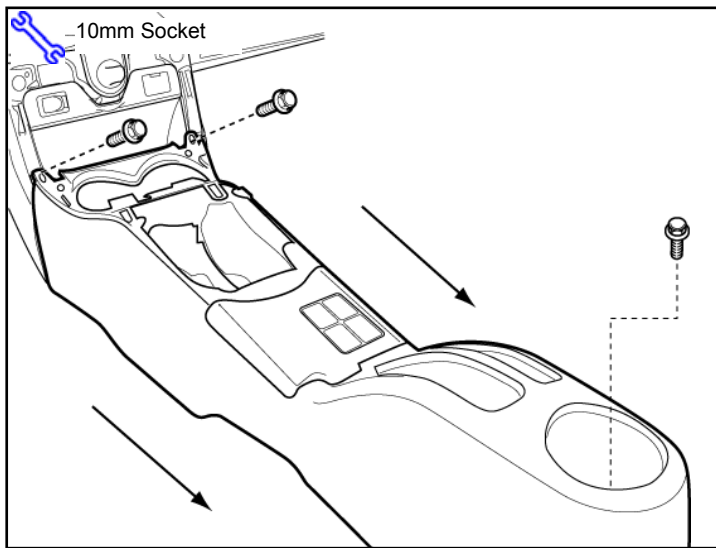


Fig. A-6

8. Remove 3 bolts.
9. Remove the Floor console.

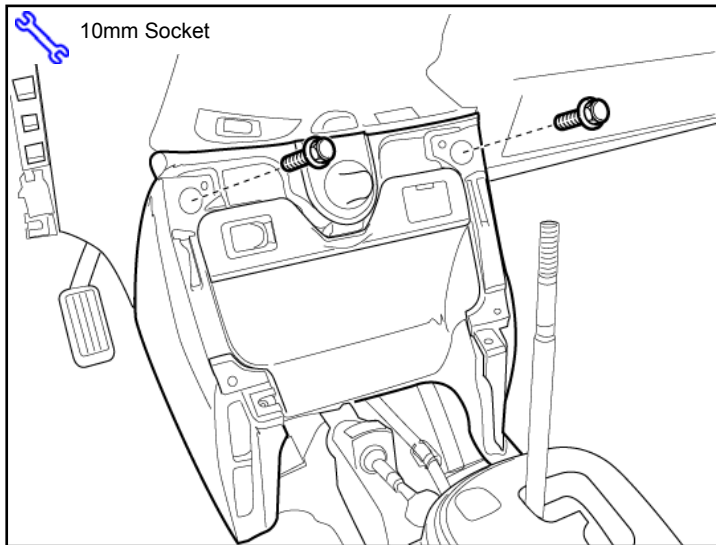


Fig. A-7

10. Remove 2 bolts and remove the Lower center console panel.

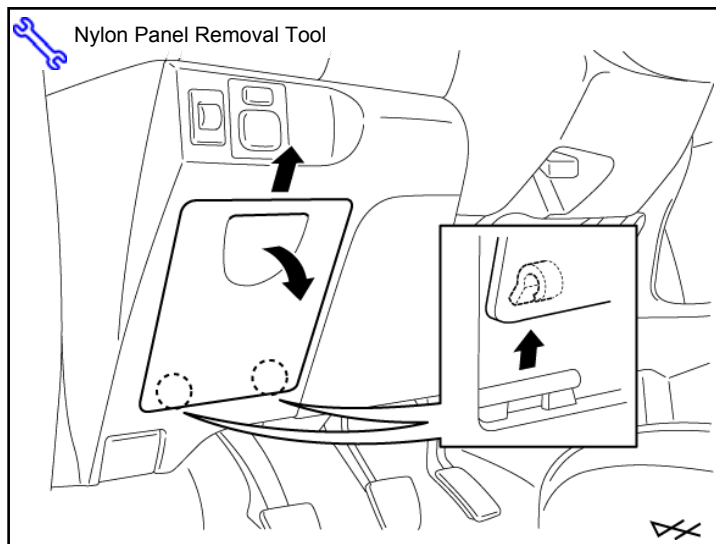


Fig. A-8

11. Remove the Storage box in Driver's side.

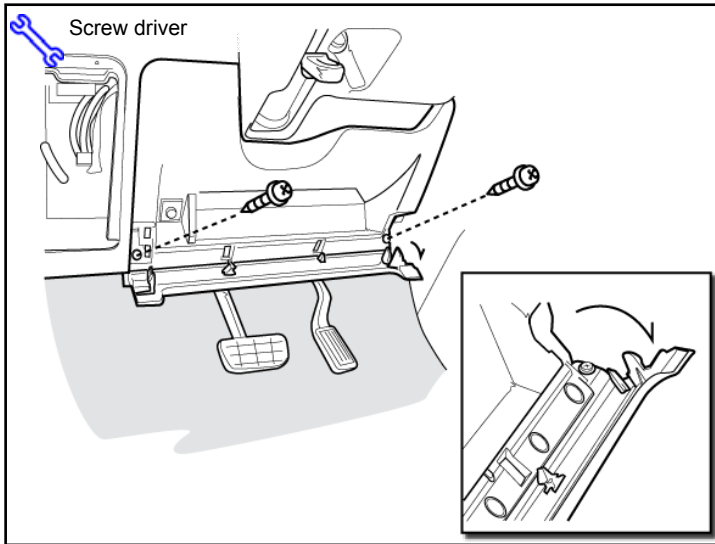


Fig. A-9

- 12. Open and release clips.
- 13. Remove 2 Screws.

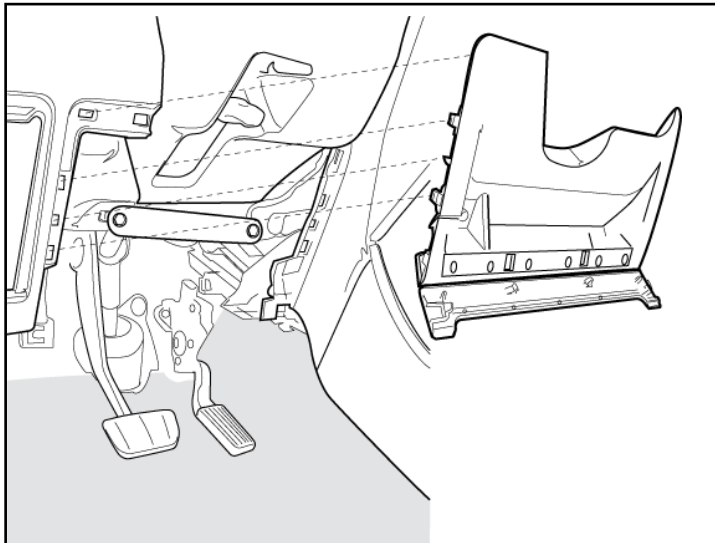


Fig. A-10

- 14. Remove the Lower dash cover.

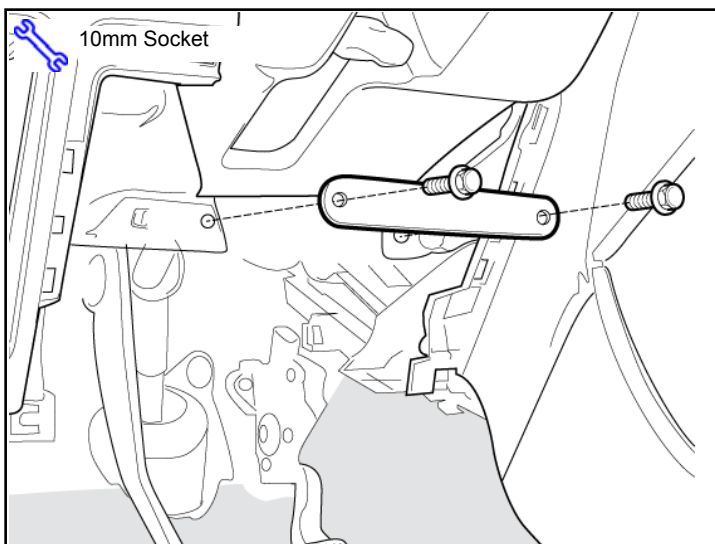


Fig. A-11

- 15. Remove 2 bolts and the metal brace.

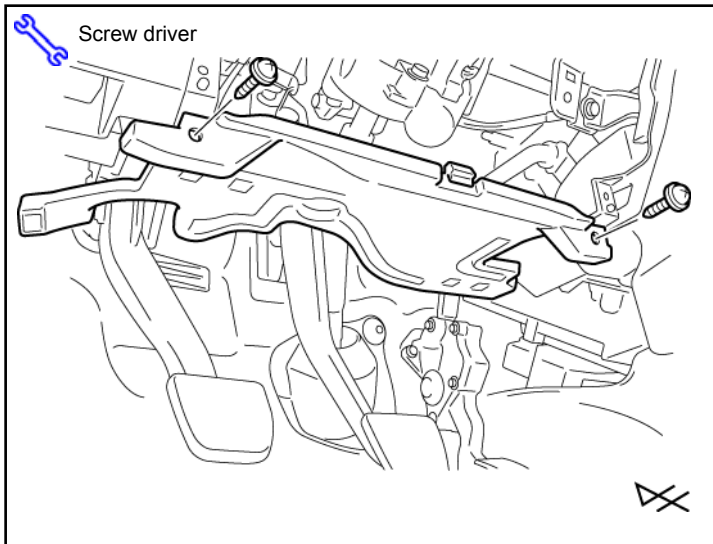


Fig. A-12

16. Remove 2 Screws and the driver side Under cover.

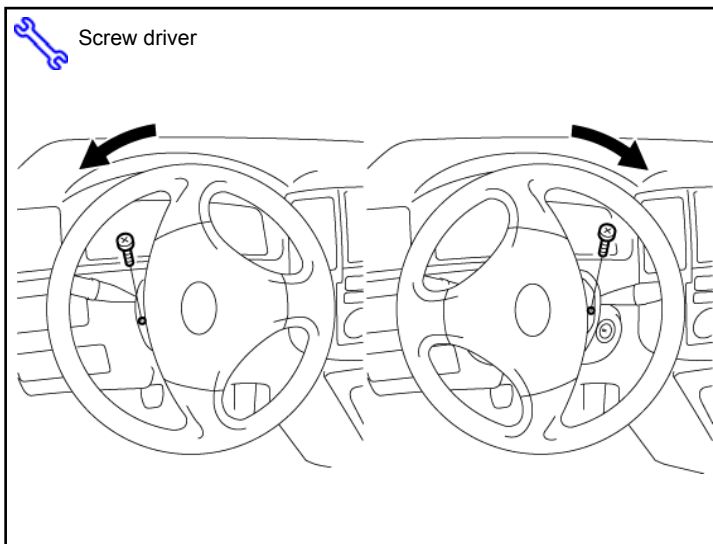


Fig. A-13

17. Insert the key into ignition switch and turn it to On.

18. Gain access to the 2 screws securing the steering column cover, and Remove them.

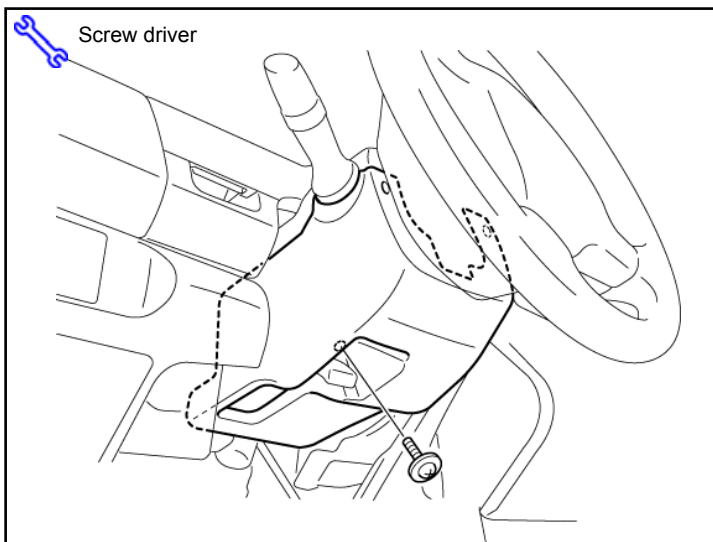


Fig. A-14

19. Remove 1 Screw.

20. Remove the Steering column cover.

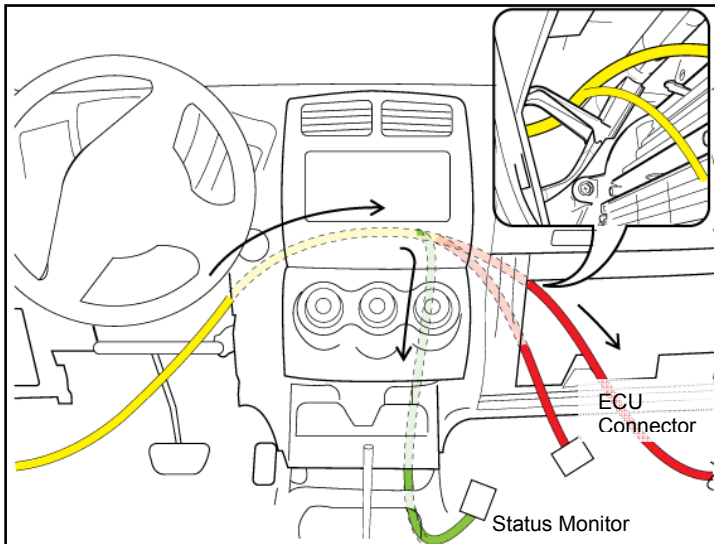


Fig.B-1

B. Wire Harness Installation (Driver's Side)

1. Route the V5 Harness through Center console.
 - (a) Harness with ECU connectors: route to passenger side.
 - (b) Harness with Status Monitor: route down towards floor console.

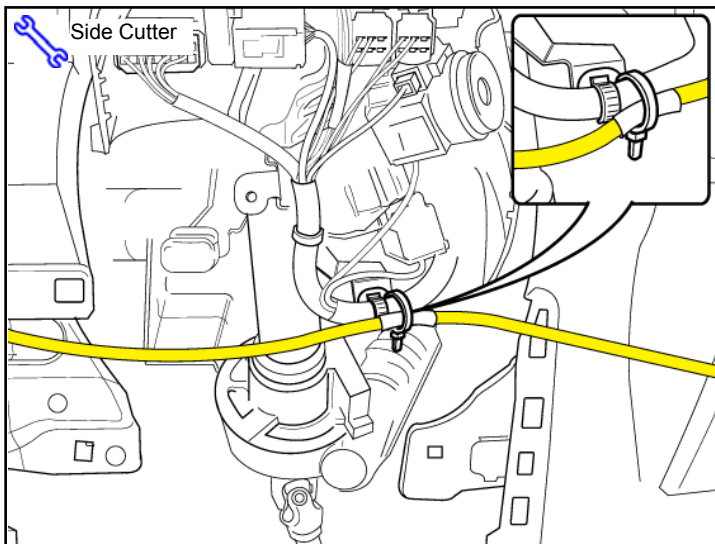


Fig.B-2

2. Secure the V5 Harness's White Tape Marker to the vehicle harness with 1 Wire Tie.

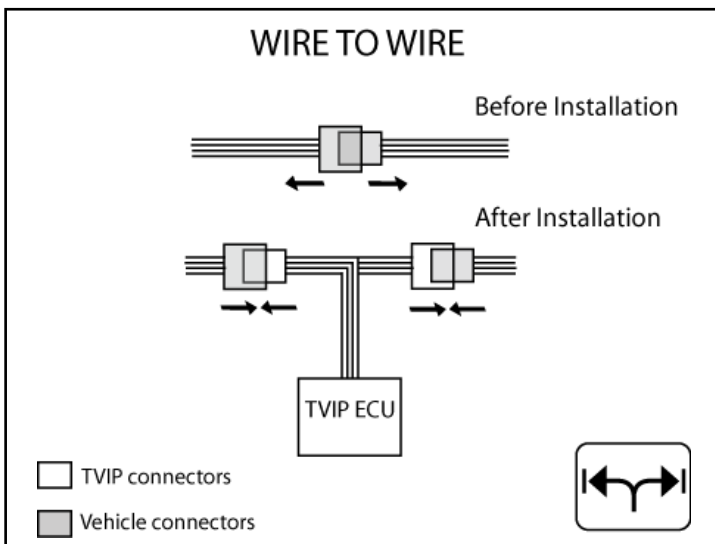


Fig. B-3



“Wire To Wire” is a process of inserting TVIP connectors between vehicle connectors in order to obtain appropriate electronic signals.

It will be repeated throughout installation.

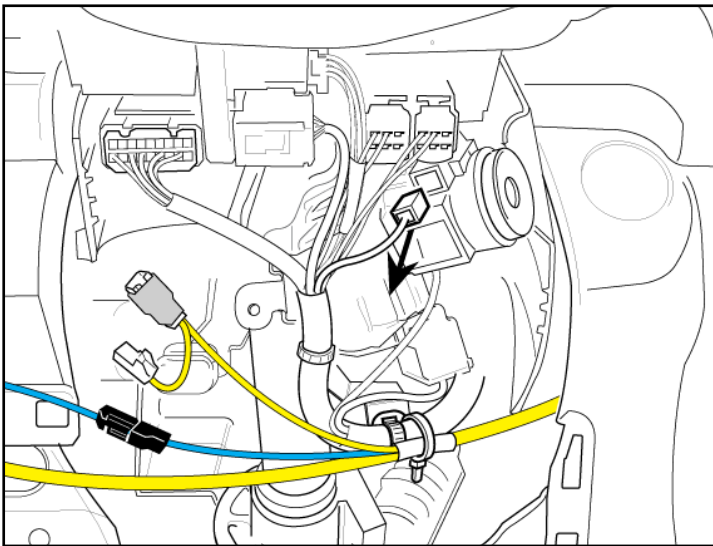


Fig. B-4

3. Unplug the vehicle 2 Pin connector as shown.

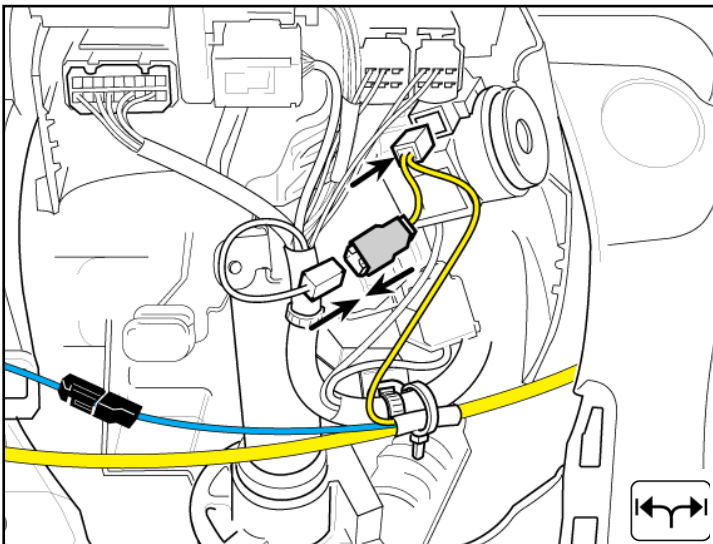


Fig. B-5

4. Proceed with "Wire to Wire". Insert V5 2 Pin Connectors in between vehicle 2 Pin connectors as shown.

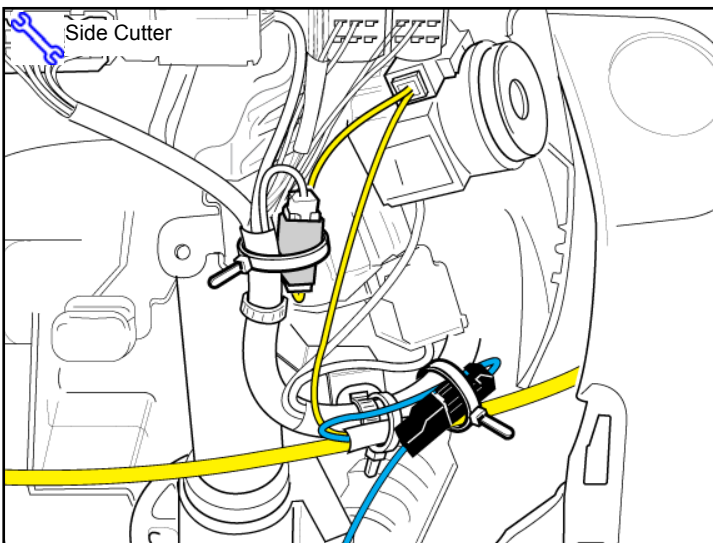


Fig. B-6

V5 only
-If vehicle is equipped with V4
Harness already, skip to step 10

5. Secure the joint 2 Pin connectors onto vehicle harness with 1 Wire Tie.
6. Secure the V5 4 Pin Connectors (black) onto the vehicle harness with 1 Wire Tie.

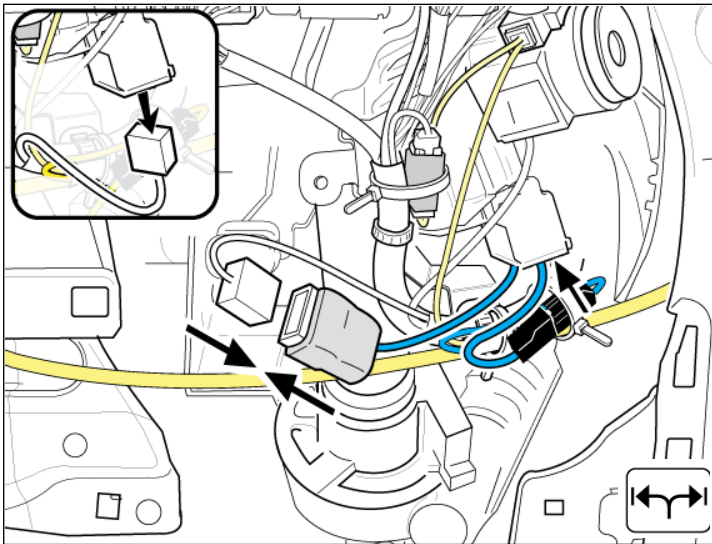


Fig.B-7

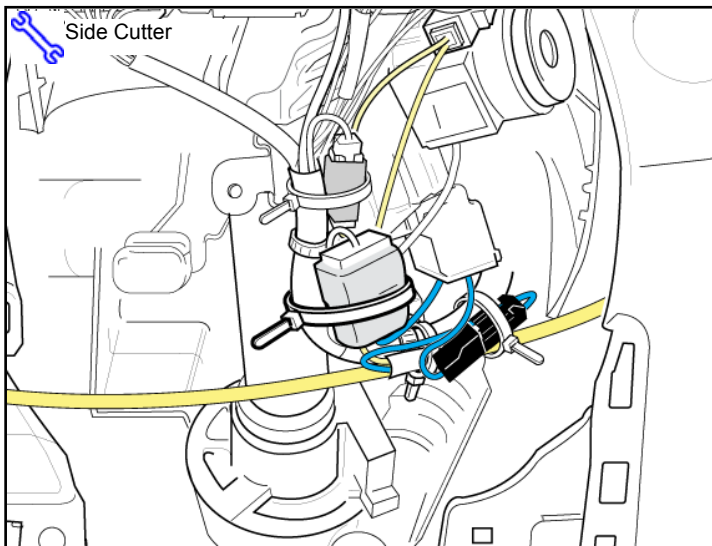


Fig. B-8

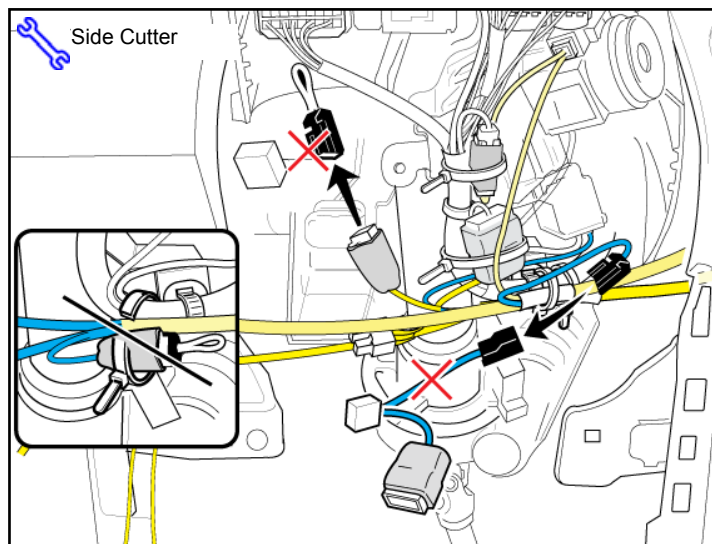


Fig. B-9

7. Unplug the vehicle 8 Pin connector.
8. Proceed with "Wire to Wire". Insert V5 8 Pin Connectors in between vehicle connectors.

9. Secure the joint 8 Pin connectors onto the vehicle harness with 1 Wire Tie.

Move onto step 14.

V5 onto V4
-Add On installation

10. If Vehicle is already equipped with V4 Harness, V5 Harness rides onto V4 Harness.
Clip off 1 Wire Tie holding V4 4 Pin Connector.
11. Unplug 2 Pin Connectors (black) on each of V4 and V5 Harnesses.

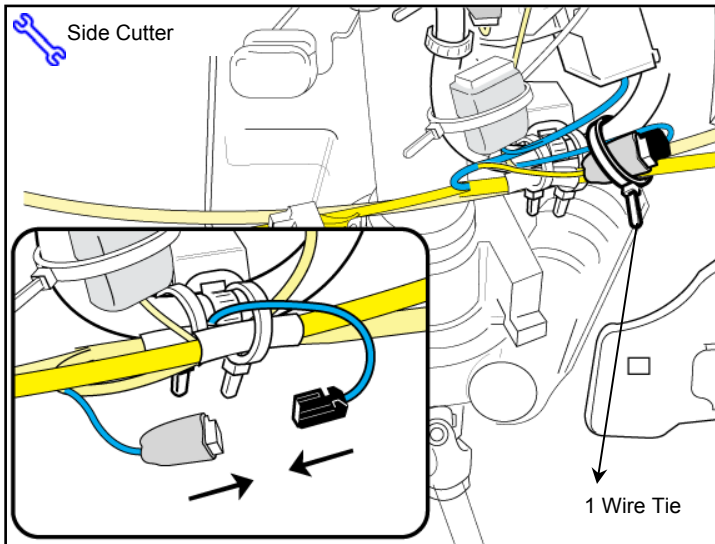


Fig. B -10

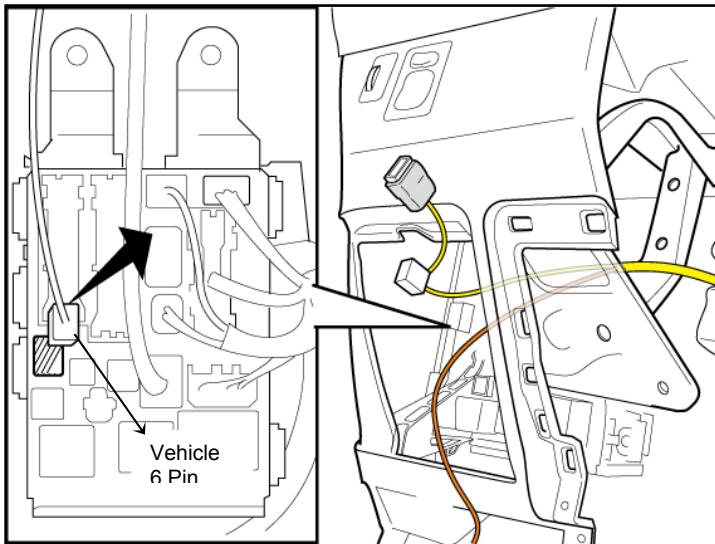


Fig.B-11

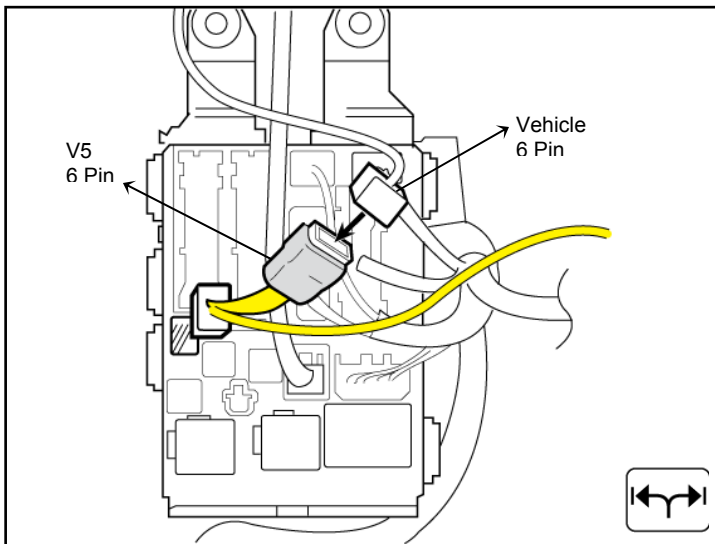


Fig.B-12

12. Insert V5 2 Pin Connector into V4 2Pin Connector.
13. Secure 4 Pin Connectors to the Vehicle harness with 1 Wire Tie.

V5 only
-If vehicle is equipped with V4
Harness already, skip to step 19

14. Unplug the vehicle 6 Pin connector on the Junction box.
15. Proceed with "Wire to Wire". Insert V5 6 Pin Connectors in between vehicle 6 Pin connectors.

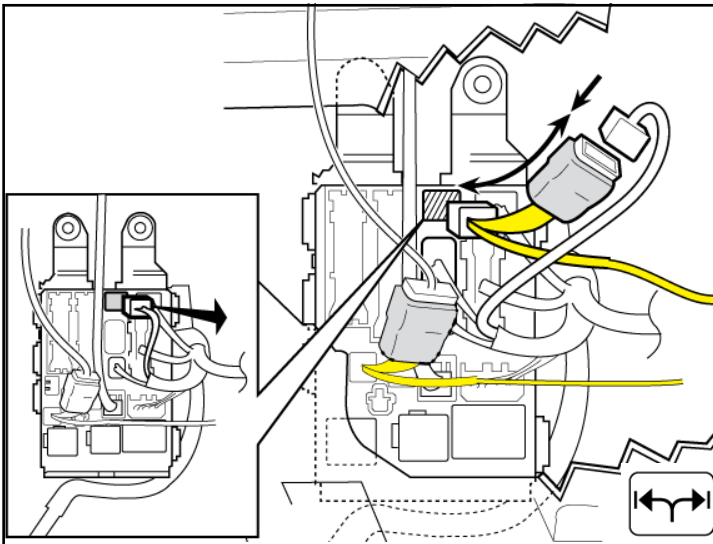


Fig.B-13

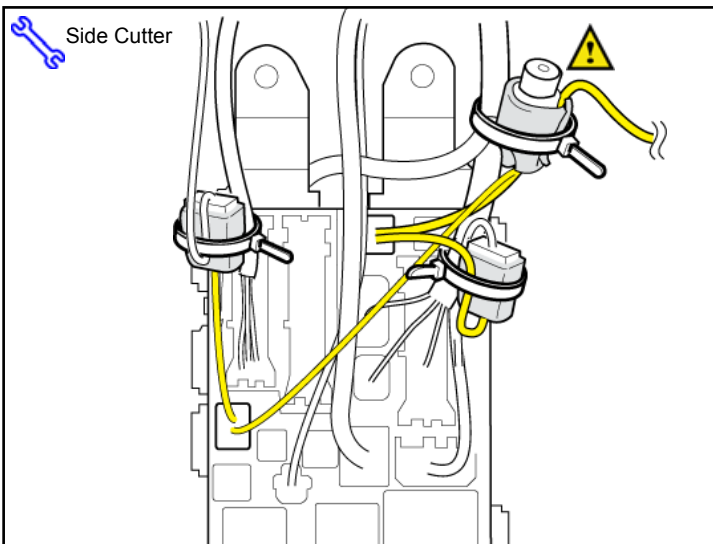


Fig.B-14

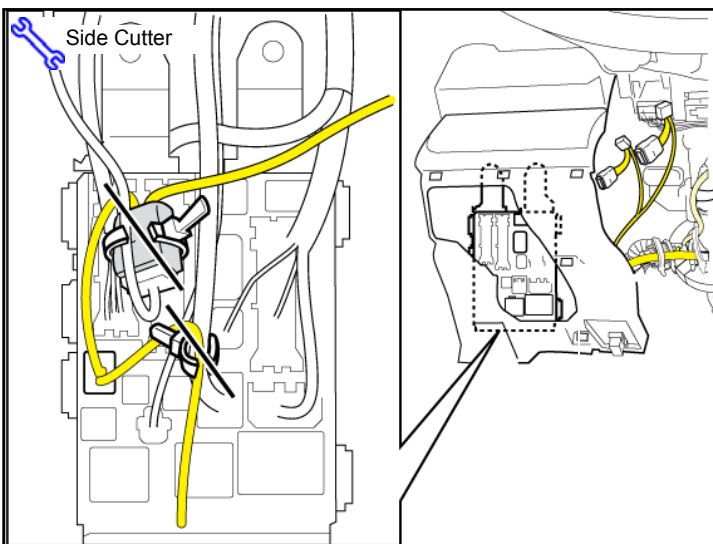



Fig.B-15

16. Unplug the vehicle 14 Pin connector on the Junction box.

17. Proceed with "Wire to Wire". Insert V5 14 Pin Connectors in between vehicle 14 Pin connectors.

18. Secure the 6 Pin and 14 Pin Connectors with 2 Wire Ties.

19. Secure the Relay with 1 Wire Tie.

 Ensure that the Relay does not contact any metal surface.

Move onto step 27.

V5 onto V4
-Add On installation

20. Clip the Wire Ties holding bundled up V4 6 Pin Connector.

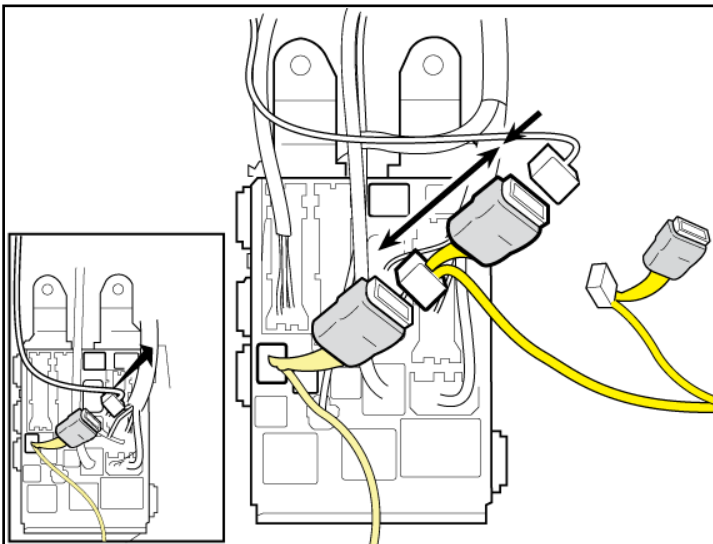


Fig.B-16

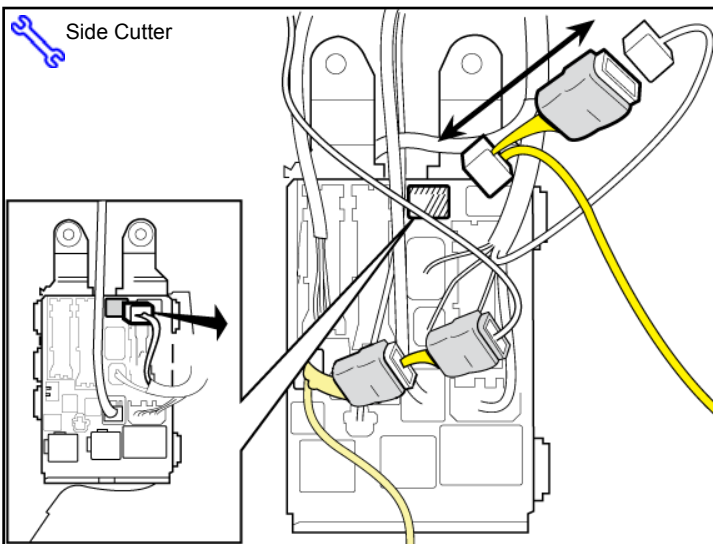


Fig.B-17

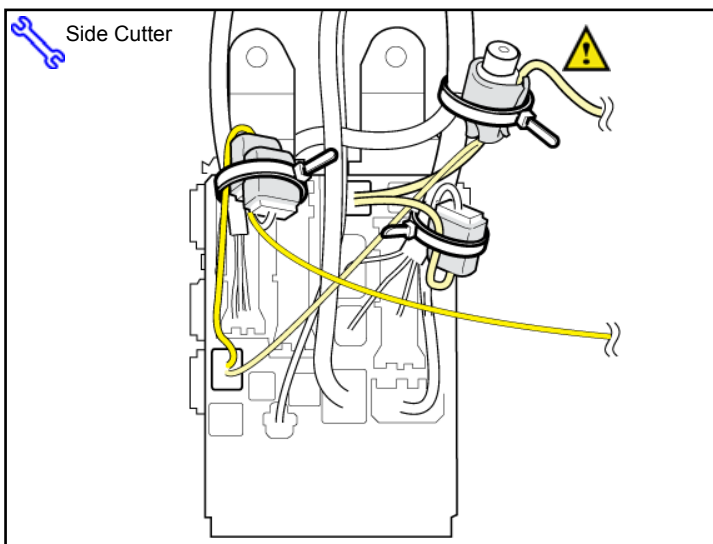



Fig.B-18

21. Unplug the vehicle 6 Pin connector from V4 6 Pin Connector.
22. Proceed with "Wire to Wire" by inserting V5 6 Pin Connectors in between V4 6 Pin Connector and vehicle 6 Pin connector.
23. Unplug the vehicle 14 Pin connector from the junction box.
24. Proceed with "Wire to Wire" by inserting V5 14 Pin Connectors in between the vehicle 14 Pin connectors.
25. Secure the 6 Pin and 14 Pin with 2 Wire Ties.
26. Secure the V5 Relay onto vehicle harness with 1 Wire Tie.

 Ensure that the Relay does not contact any metal surface

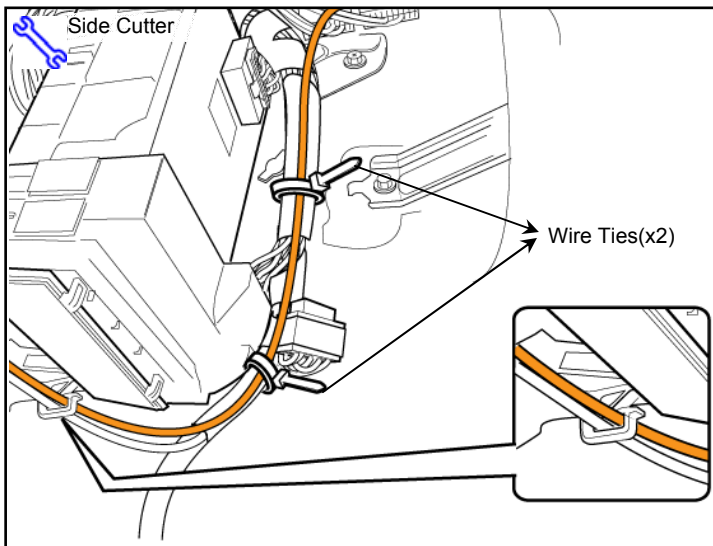


Fig.B-19

27. Route the V4 Harness through the Junction box clip.

28. Secure the V4 Harness to vehicle harness with 2 Wire Ties.

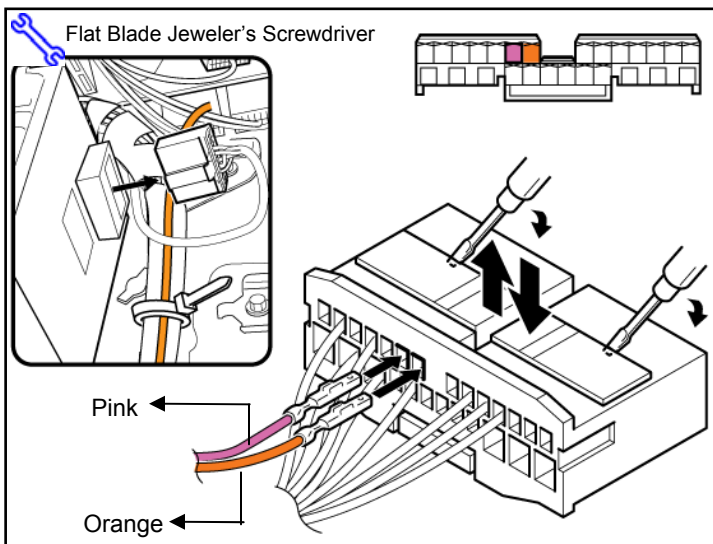


Fig.B-20

29. Unplug the 26 Pin Connector on the back of Junction box.

30. Lift up the Terminal retainer on the 26 Pin Connector, using Jeweler's screwdriver.

31. Insert the Orange and Pink wire Terminals into the indicated slots of the 26 Pin connector, and close the retainer.

32. Plug the vehicle 26 Pin connector back into Junction box.

C. TVIP ECU Preparation

1. Set the GBS ECU's sensitivity to 8.

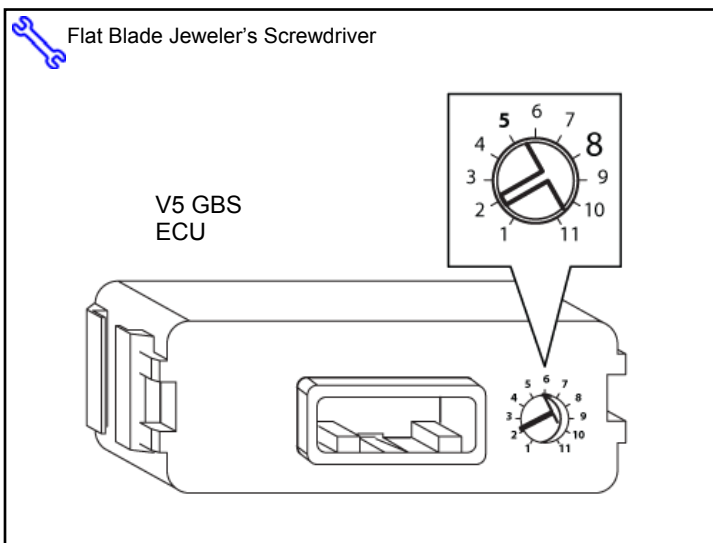


Fig.C-1

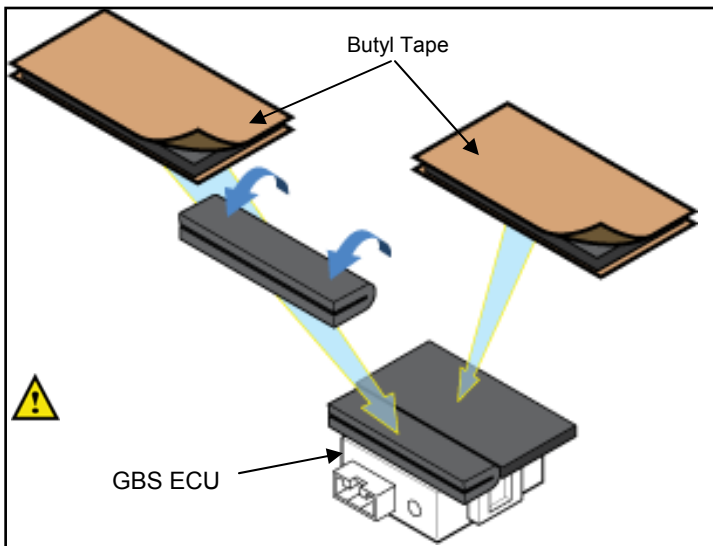


Fig.C-2

2. Fold 1 Butyl Tape as shown and apply it to the GBS ECU.
3. Apply 1 Butyl Tape to the ECU as shown.

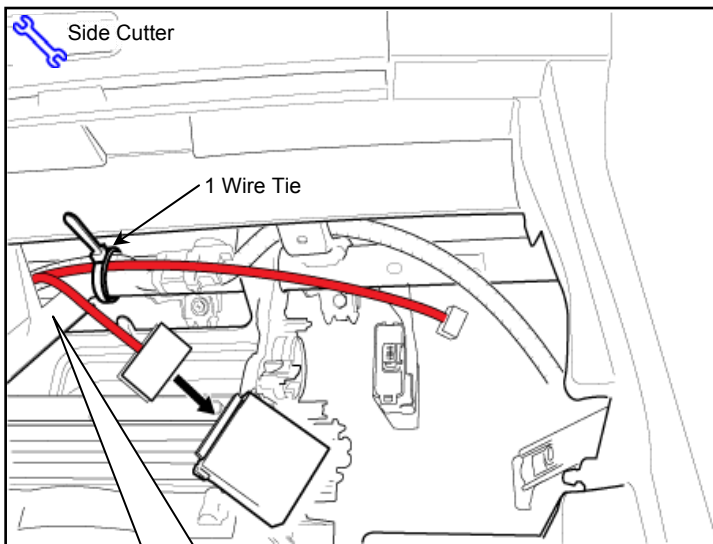


Fig.D-1

D. Wire Harness Installation (Passenger's side)

1. Secure V5 Harness to the reinforcement with 1 Wire Tie.
2. Insert V5 36 Pin Connector into V5 Security ECU.

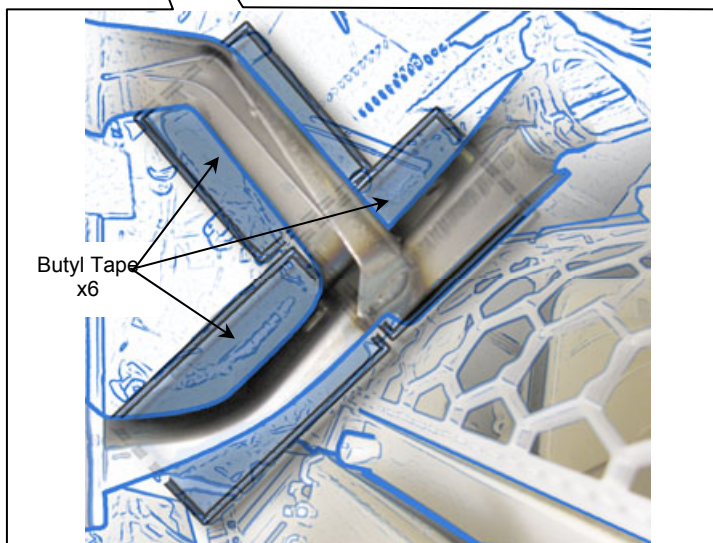


Fig.D-2

3. Put 3 pieces of Butyl Tape on the Reinforcement as shown.
4. Put 3 more pieces of Butyl Tape on top of the previously applied Butyl Tape.

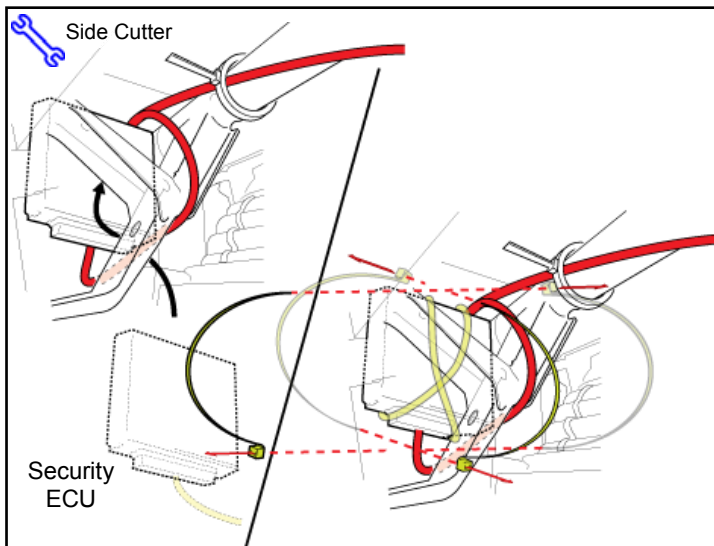


Fig.D-3

5. Maneuver and place V5 Security ECU behind the vehicle metal brace as shown and secure it lightly with the Butyl Tape.
6. Secure the V5 Security ECU to the Reinforcement using 4 Wire Ties (2 sets of 2) placed in an X pattern.

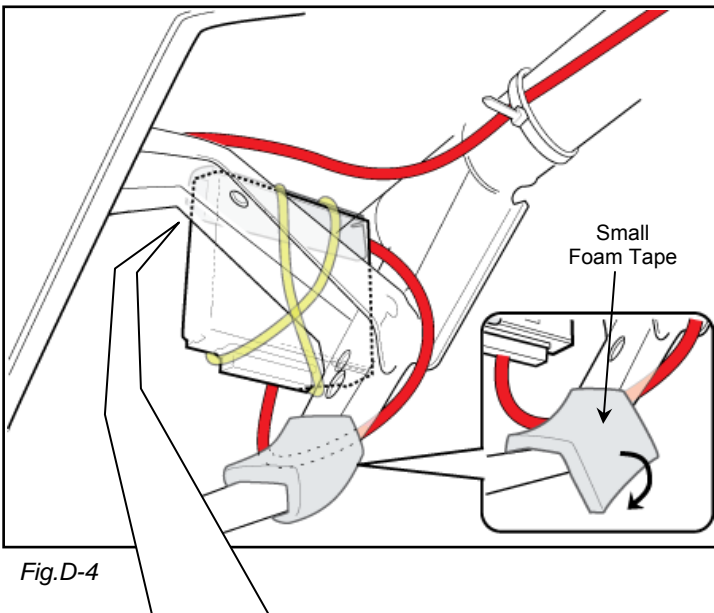


Fig.D-4

7. Apply 1 small Foam Tape on the vehicle metal brace as shown.

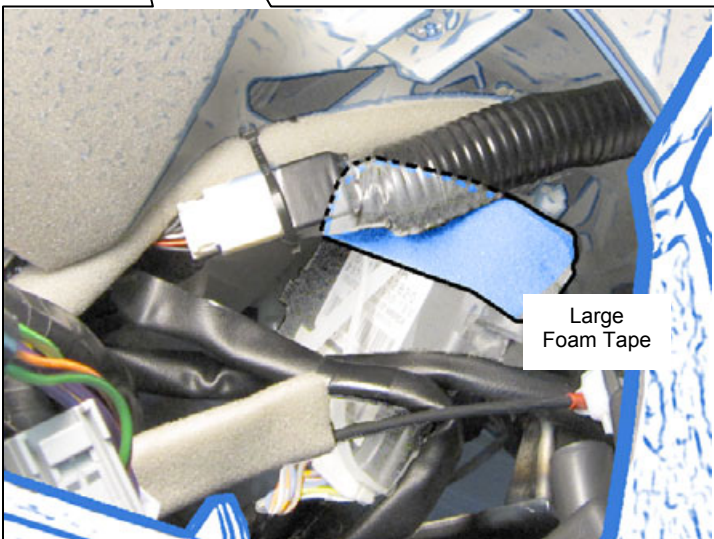


Fig.D-5

8. Apply 1 large Foam Tape to the V5 ECU's edge.

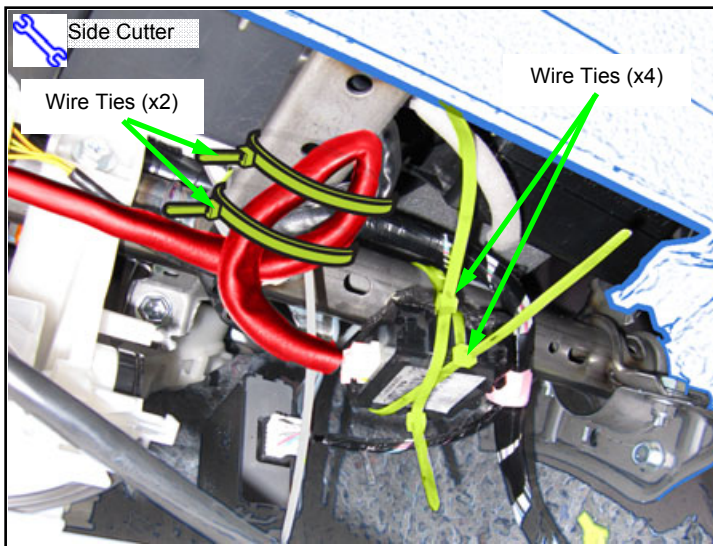


Fig.D-6

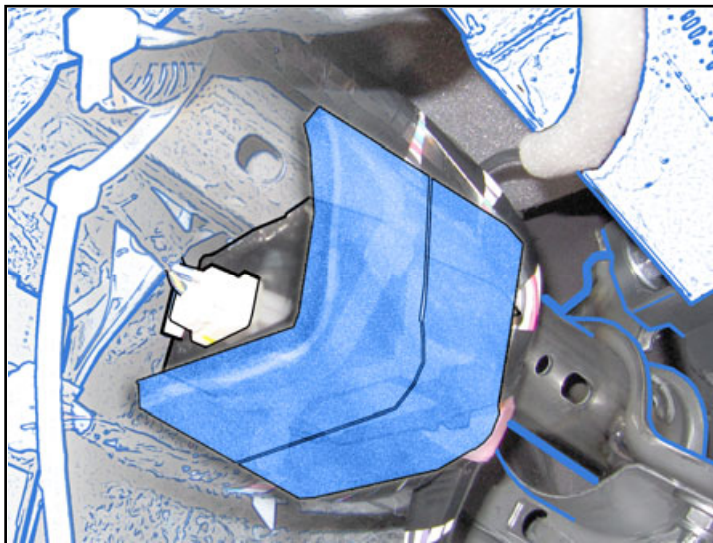


Fig.D-7

9. Secure the V5 GBS ECU to the reinforcement brace lightly as shown with the Butyl Tape on the GBS ECU.
10. Secure the V5 GBS ECU to the Reinforcement using 4 Wire Ties (2 sets of 2) placed in an X pattern.
11. Insert V5 8 Pin Connector into the GBS ECU.
12. Bundle up the excess V5 Harness and secure it to the Vehicle Brace with 2 Wire Ties.
13. Apply 2 large Foam Tapes to the GBS ECU and Wire Ties after trimming the Wire Ties.

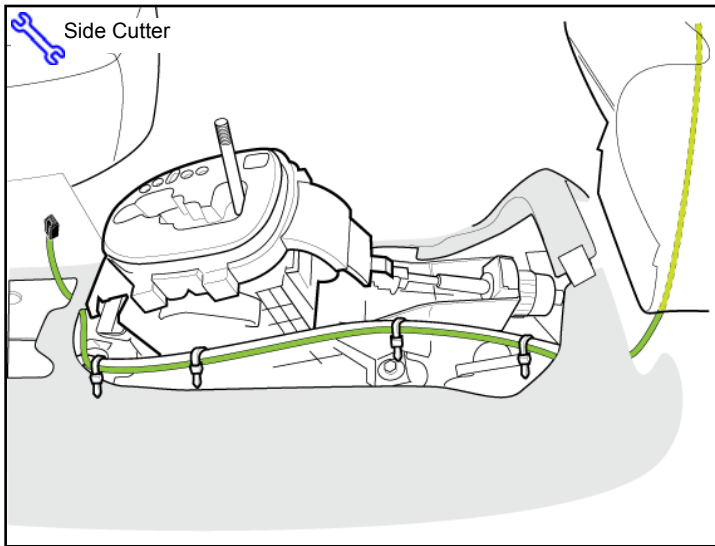


Fig.E-1

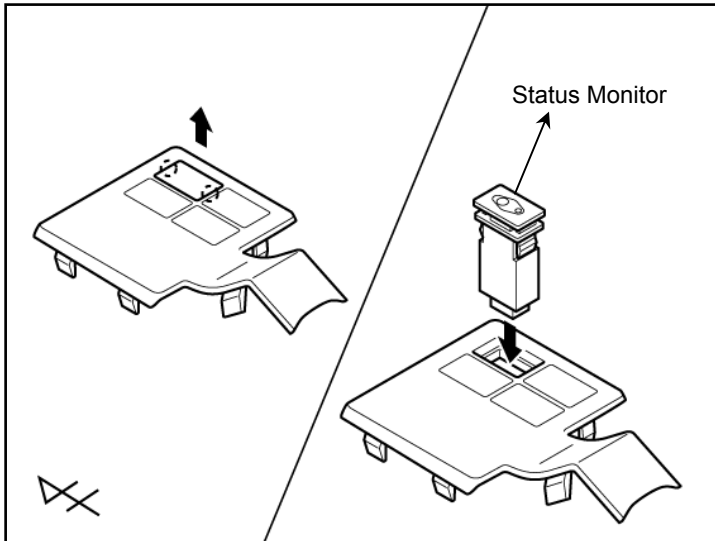


Fig.E-2

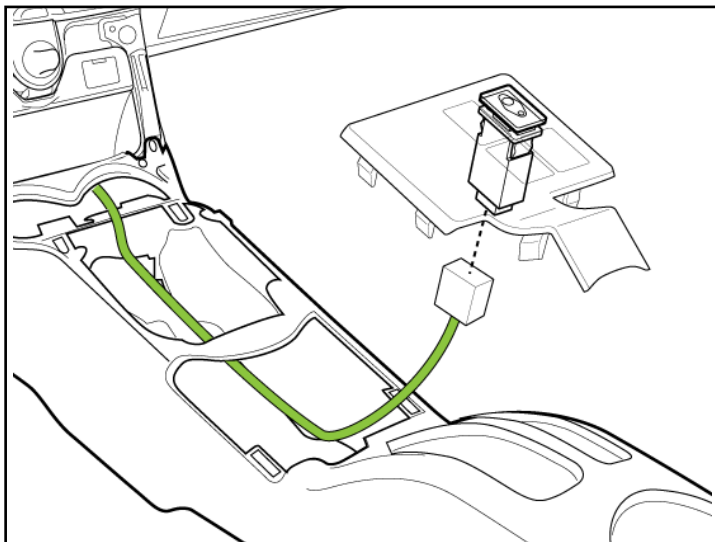


Fig.E-3

E. Status Monitor Installation

1. Route the V5 Harness down to center console area as shown.
2. Secure V5 Harness onto vehicle harness with 4 Wire Ties.
3. Remove the knockout cover.
4. Insert V5 Status Monitor in place.
5. Insert 8 Pin Connector (black) into the Status Monitor.

Rest the Floor console on top of center console temporarily.

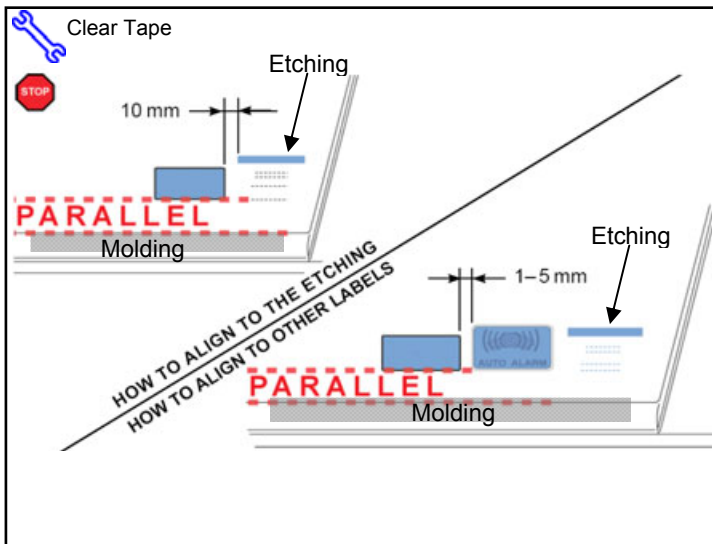


Fig.F-1

F. Attaching the Labels

1. Use Household Glass Cleaner to clean the inside of the Front Door Windows.
2. Use a piece of Clear Tape to lift the Label from the protective backing.



CAUTION: Do not touch the adhesive surface.

3. Attach the Label as shown.



NOTE: Make sure to Align according to Etching or Other Label.

REPEAT: steps 1–3 with the other Window.

G. Completion of Installation

1. Verify the Dome Fuse is installed.
2. Reassemble the vehicle.



Verify that panels fit together properly, with no uneven gaps.

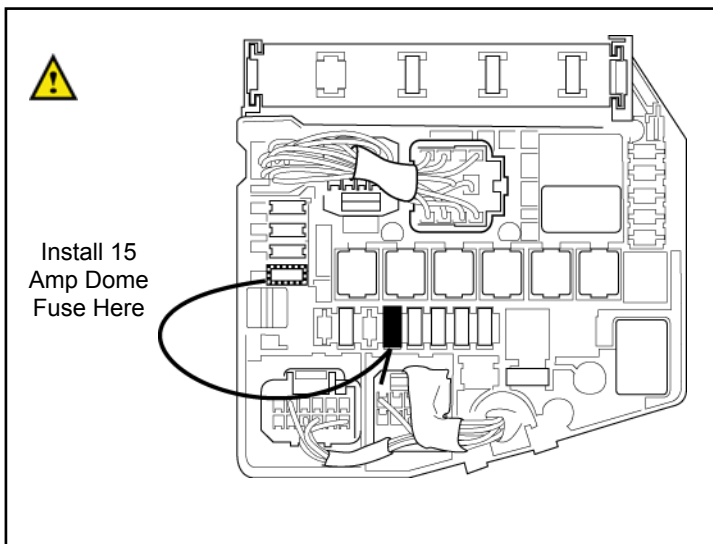


Fig.G-1

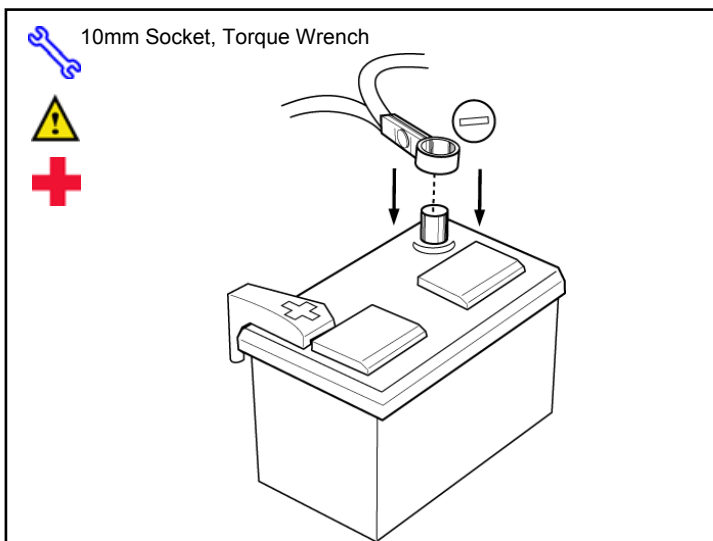


Fig.G-2



3. Position the Negative Battery Cable at the original factory position.
4. Tighten the Nut to 36 in•lbf. (4.07 N•m)



DO NOT TOUCH THE POSITIVE BATTERY TERMINAL.

5. Clean up and remove trash.
6. Place the owner's manual, sealed in its protective bag, in the glove box.

Accessory Function Checks

Perform		Look For
1	Press and release the remote control's lock button to start the system's arming process.	The turn signal lights flash once. All doors lock. The security LED lights up.
2	Wait 30 seconds.	Security LED starts flashing; the system is now armed.
3	Press and release the remote control's unlock button to disarm the system.	The turn signal lights flash twice. The driver's door unlocks. The Security LED stops flashing.

Open the driver's door, insert the key into the ignition switch and turn it to "ON." Roll down all the windows, remove the key and exit the vehicle.

4	Arm and disarm the system with the remote again, then wait 30 seconds.	The doors automatically relock. The system automatically starts the arming process.
5	Press and release the remote control's unlock button again to stop the arming process.	Refer to step 3
6	Insert the key into the driver's door key cylinder and turn it toward the front of the vehicle to start the arming process.	All doors lock. The Security LED lights up.
7	Wait 30 seconds.	Security LED starts flashing; the system is now armed.
8	Reach inside and manually unlock the driver's door to trigger an alarm.	The driver's door automatically relocks. The horn sounds repeatedly. The headlights flash repeatedly. The turn signal lights flash repeatedly. The Security LED lights up.
9	Manually unlock the driver's door again and hold it unlocked, open the door, then sit in the driver's seat.	The driver's door lock attempts to lock repeatedly. The horn continues to sound repeatedly. The headlights and turn signal lights continue flashing. The Security LED remains on.
10	Press and release the remote control's unlock button to disarm the system.	The horn stops sounding. All the lights stop flashing and/or turn off. The Security LED turns off.

Take the remote and then exit the vehicle.

11	With the door open, press the lock switch on the door to lock the doors, then close the door to start the system's arming process.	All doors lock. The Security LED lights up.
12	Wait 30 seconds.	Security LED starts flashing; the system is now armed.

13	Reach inside and manually unlock the front passenger's door to trigger an alarm.	The front passenger's door automatically relocks. The horn sounds repeatedly. The headlights flash repeatedly. The turn signal lights flash repeatedly. The Security LED lights up.
14	Press and release the remote control's unlock button to stop the alarm.	The horn stops sounding. All the lights stop flashing. The Security LED stops flashing.
15	Press and release the remote control's lock button to start the system's arming process, then wait 30 seconds until the system is armed.	Refer to steps 1 and 2.
16	Unlock and open one of the rear passenger doors to trigger an alarm. (if available)	Refer to step 13.
17	Press and release the remote control's unlock button to stop the alarm.	Refer to Step 14
18	Repeat the above steps with the other rear passenger door. (if available)	Refer to steps 1, 2, and 13.

Roll up all windows, remove the key and exit the vehicle.

19	Press and release the remote control's lock button to start the arming process.	Refer to step 1.
20	Wait 30 seconds.	After 30 seconds, the Security LED starts flashing; the system is now armed.

Perform the following check in a temperature-controlled environment. (50°-90° F)

21	With the tip of a key, or Striker Tool pulled all the way out (PPO only), tap the center of the driver's door window to trigger the alarm.	The horn sounds repeatedly. The headlights flash repeatedly. The turn signal lights flash repeatedly. The Security LED lights up.
22	Insert the key into the driver's door key cylinder and turn it toward the back of the vehicle to stop the alarm.	Refer to Step 14

NOTE: If the alarm still does not trigger during the section test, increase the GBS sensitivity to the next setting and test again.

NOTE: If you do not disarm the system, the alarm will last 20 seconds. It is not necessary to check the alarm duration.








Vehicle Function Checks

Function	Function
----------	----------

Enter the Vehicle

<input type="checkbox"/> Dome/Courtesy Lights	<input type="checkbox"/> Steering Wheel Column Adjusts Without Interference
<input type="checkbox"/> Horn	<input type="checkbox"/> Hood Latch Release

Start the Vehicle

<input type="checkbox"/> Starter	<input type="checkbox"/> Gauges
<input type="checkbox"/> Panel/Switch Illumination	<input type="checkbox"/> ABS Light (if equipped) <i>If the warning light remains on, it may indicate a system malfunction.</i> 
<input type="checkbox"/> Lamp Failure Sensor <i>If the warning light remains on, it may indicate a system malfunction.</i> 	<input type="checkbox"/> Track/Skid Control Light (if equipped) <i>If the warning light remains on, it may indicate a system malfunction.</i> 
<input type="checkbox"/> Seat Belt Warning Light <i>If the warning light remains on, it may indicate a system malfunction.</i> 	<input type="checkbox"/> Tire Pressure Monitoring System (TPMS) <i>Prior to TPMS activation and Pre-delivery Service (PDS) of the Vehicle the TPMS light will blink when IG is turned on.</i> <i>After TPMS activation and PDS of the Vehicle the TPMS light will illuminate for a few seconds and go off when IG is turned on.</i> 
<input type="checkbox"/> Air Bag Warning Light <i>If the warning light remains on, it may indicate a system malfunction.</i> 	
<input type="checkbox"/> Cruise Control Light (if equipped) 	

Using a Mirror or Assistant check the following.

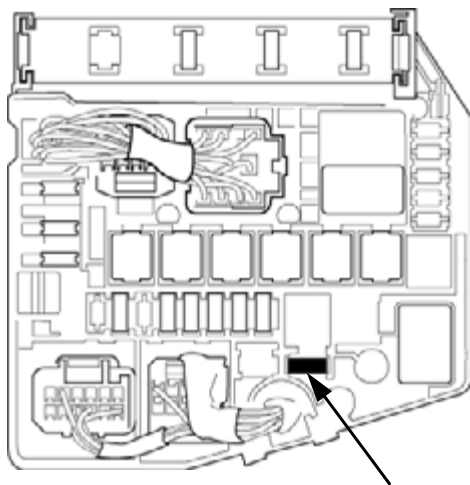
<input type="checkbox"/> Trunk/Tailgate/Bed Lights (if equipped)	<input type="checkbox"/> Tail Lights
<input type="checkbox"/> Brake Lights	<input type="checkbox"/> Daytime Running Lights (if equipped)
<input type="checkbox"/> Backup Lights	<input type="checkbox"/> Marker Lights
<input type="checkbox"/> Clearance Sonar (if equipped)	

Stop the Engine, Place the Vehicle's IG in the ON position.

<input type="checkbox"/> Hazard Lights	<input type="checkbox"/> Turn Signal Lights
<input type="checkbox"/> Head Light	<input type="checkbox"/> Fog Lights (if equipped)
<input type="checkbox"/> High Beams	<input type="checkbox"/> Accessory Controls/Illumination (if equipped)
<input type="checkbox"/> Power Side Mirrors (if equipped)	<input type="checkbox"/> Convenience Memory Settings (if equipped)
<input type="checkbox"/> Power Sliding Door (if equipped)	<input type="checkbox"/> Rear Sunshade (if equipped)

Function		Function	
<input type="checkbox"/>	Front Wiper/Washer	<input type="checkbox"/>	Rear Wiper/Washer (if equipped)
<input type="checkbox"/>	Power Sun/Moon Roof (if equipped)	<input type="checkbox"/>	Rollover Side Curtain Air Bag Switch (RSCA) (if equipped)
<input type="checkbox"/>	Clock (if equipped)	<input type="checkbox"/>	Navigation System (if equipped)
<input type="checkbox"/>	Audio/Video (if equipped)	<input type="checkbox"/>	HVAC
<input type="checkbox"/>	Steering Wheel Audio Control (if equipped)	<input type="checkbox"/>	Rear Window Defogger (if equipped)
<input type="checkbox"/>	Front Windshield Defogger (if equipped)	<input type="checkbox"/>	Accessory Power Socket (if equipped)
<input type="checkbox"/>	Side Mirror Defogger (if equipped)	<input type="checkbox"/>	Heated/Vented Seats (if equipped)
<input type="checkbox"/>	Massage Seats (if equipped)		
<input type="checkbox"/>	Glovebox Light (if equipped)	<input type="checkbox"/>	Passenger Air Bag Switch (if equipped)
<input type="checkbox"/>	Power Locks (if equipped)	<input type="checkbox"/>	Power Windows (if equipped)
<input type="checkbox"/>	Power Seats (if equipped)	<input type="checkbox"/>	Key Sensor Buzzer

Remove the short pin after Function check.
Check with your Port/Dealer to see if this step is necessary.



Store Fuse